

Elastic waistband  
with no drawstring



Elastic cuffs

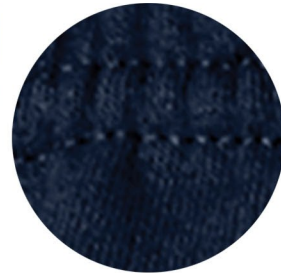
### 182B

#### Product Features:

- 13.3-oz, 50/50 cotton/polyester fleece

Youth Sizes: S(6-8), M(10-12), L(14-16), XL(18-20)

#### Icons/Fabric Features:



### Available Colours and PMS Colours

Textile fabric colours are subject to dye lot variation and will not be exact match to print pantone reference

SPORT GREY



Cool Grey 7C

BLACK



426C

NAVY



533C

# 182B - GILDAN® Heavy Blend™ Youth Sweatpants

## GARMENT MEASUREMENTS

Size	S	M	L	XL
Waist	10 1/2"	11"	12"	13"
Inseam	19"	22"	25"	29"

*Finished measurements in inches. Refer to "How to Measure" guide for detailed information on measurement instructions.*

## YOUTH General Sizing Guide

Size	S	M	L	XL
Numeric Size	6-8	10-12	14-16	18-20
Waist	23"-24 1/2"	24 1/2"-25 1/2"	25 1/2"-27"	27"-29"

The GILDAN logo is displayed in a bold, blue, sans-serif font. The letters are all uppercase, and a registered trademark symbol (®) is located at the top right of the letter 'N'.

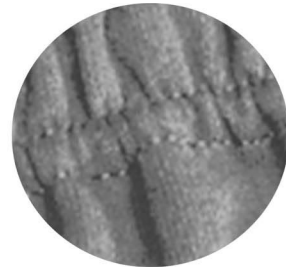
**1820**

**Product Features:**

- 13.3-oz, 50/50 cotton/polyester fleece

Adult Sizes: S-2XL

**Icons/Fabric Features:**



**Available Colours and PMS Colours**

Textile fabric colours are subject to dye lot variation and will not be exact match to print pantone reference

SPORT GREY

BLACK

NAVY



Cool Grey 7C

426C

533C

# 1820 - GILDAN® Heavy Blend™ Sweatpants

## GARMENT MEASUREMENTS

Size	S	M	L	XL	2XL
Waist	13"	14"	15"	16"	18"
Inseam	29"	29 1/2"	30"	30 1/2"	31"

*Finished measurements in inches. Refer to "How to Measure" guide for detailed information on measurement instructions.*

## ADULT General Sizing Guide

Size	S	M	L	XL	2XL
Waist	29"-32"	32"-35"	35"-38"	38"-41"	41"-44"

The GILDAN logo is displayed in a bold, blue, sans-serif font. The letters are all uppercase, and a registered trademark symbol (®) is located at the top right of the letter 'N'.